

**Division of Cancer Prevention:**  
Population Science, Epidemiology, & Disparities Research

Report to the NCAB Subcommittee

*Barry Kramer, MD, MPH*  
*Division of Cancer Prevention*

# Population/Community-Based Research and Health Disparities

## NCI Community Oncology Research Program (NCORP)

- Health disparities research through 12 minority/underserved community sites and 34 community sites
  - 52% of MB-NCORP accruals; 20% of NCORP accruals overall
- Cancer Care Delivery Research in collaboration with DCCPS
- Access to cancer therapy trials in the local community
- **Planned:** New onset diabetes (NOD) cohort for diagnosis of pancreatic cancer
  - 10,000 newly diagnosed patients
  - Blood samples over 3 years to establish probability of pancreatic cancer development
  - Biobank of annotated specimens: Use samples for validation of emerging early detection tests

# Primary Prevention Research: Large Trials and Cohorts

## **Aspirin in Reducing Events in the Elderly (ASPREE)** with the National Institute on Aging (NIA)

- Age 70+ (65+ for African-Americans)
- Examining whether the potential benefits of low-dose aspirin (i.e., preventing heart disease, stroke, **cancers**, and dementia) outweigh the risks (particularly bleeding).

## **Diabetes Prevention Program Outcome Study (DDPOS)** with the National Institute of Diabetes and Digestive and Kidney Diseases (NIDDK)

- A population at risk of diabetes
- Examining if metformin or lifestyle intervention used to prevent development of diabetes can also modify cancer incidence.
- Obesity-related cancers (breast, colon & rectum, endometrium, pancreas, esophagus, gall bladder, and kidney).

# Screening Trials

## Tomosynthesis Mammographic Imaging Screening Trial (TMIST)

- Plan to begin patient recruitment summer 2017
- 165,000 women ages 45-74
- Randomized to 2D digital mammography  $\pm$  3D tomosynthesis mammography for 4 years
- Primary endpoint: reduction in advanced cancers
  - Will address overdiagnosis clinically

## Screening at Clinical and Molecular Levels

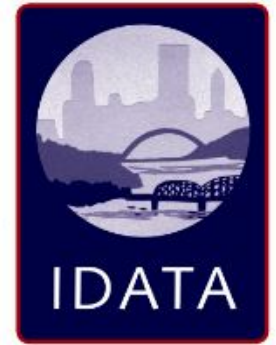
- Consortium on Molecular and Cellular Characterization of Screen-Detected Lesions (MCL)

# Biorepositories and Post-Trial Analyses

- **National Lung Screening Trial and Prostate, Lung, Colorectal, and Ovarian Cancer Screening Trials**
  - Ongoing post-trial follow-up analyses
- **Cancer Data Access System website**
  - NLST, PLCO, IDATA: Data and specimens available for investigator use (not funding)
- **PAR 15-297 for utilizing the PLCO biospecimens**
  - Resource to bridge gaps in cancer etiology and early detection research PLCO data



# Epidemiology and Biometry

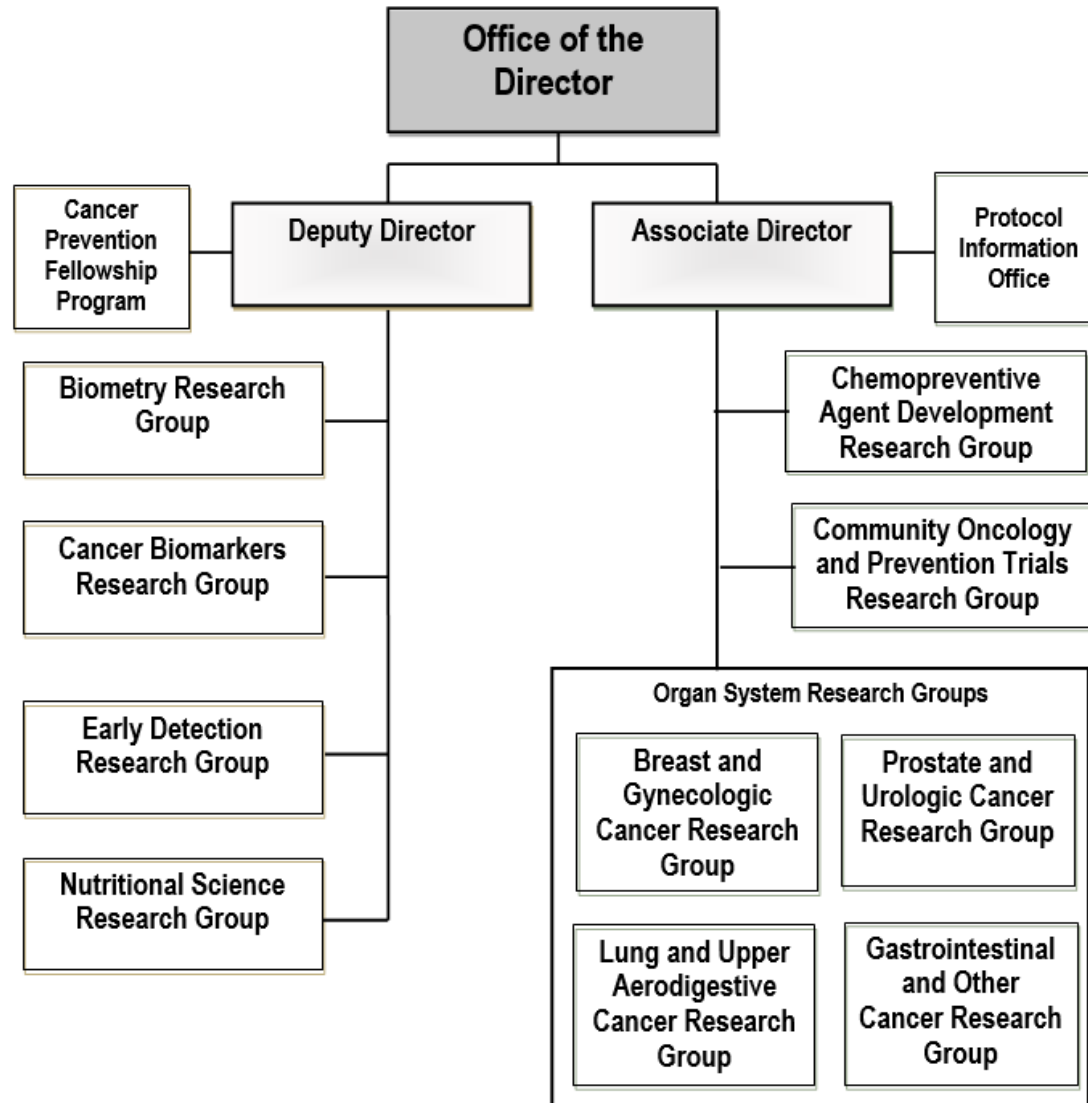


- Development of new research methods and behavioral intervention programs
- Measurement error in lifestyle studies (diet & exercise)
- **Interactive Diet and Activity Tracking in AARP (IDATA) Study**
  - Methodologic study of device-based, internet-based, and conventional self-report instruments for assessing physical activity and diet in epidemiologic research
  - Data collected in 2013 are available to all qualified investigators for studies of physical activity and nutrition
  - Interested investigators can request access to IDATA Study data via the NCI Cancer Data Access System

# Training the Next Generation of Cancer Prevention Scientists

- **NCI Cancer Prevention Fellowship Program**
  - Celebrated its 30th anniversary in 2017
  - Multidisciplinary training for post-doctoral fellows in basic, quantitative, social and behavioral sciences, clinical cancer prevention
  - 40 current fellows work in several NCI divisions and at the Food and Drug Administration
  - Two summer courses:
    - Principles and Practice of Cancer Prevention Control Course
    - Molecular Prevention Course

# DCP Organization Chart







**NATIONAL  
CANCER  
INSTITUTE**

[www.cancer.gov](http://www.cancer.gov)

[www.cancer.gov/espanol](http://www.cancer.gov/espanol)