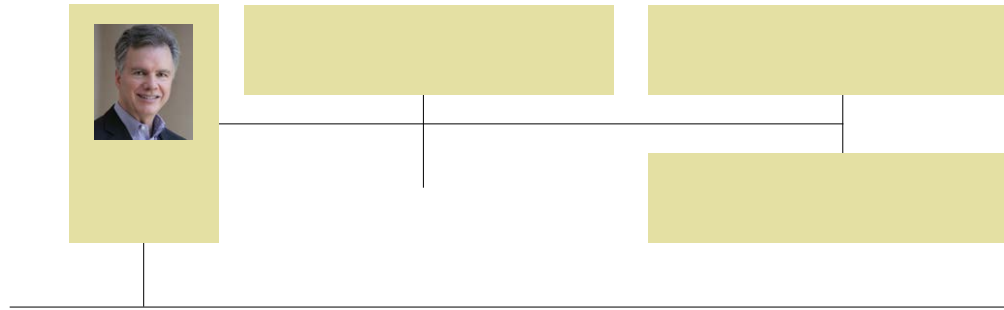


NCI Division of Cancer Control and Population Sciences

Robert T. Croyle, Ph.D.
Director, DCCPS

NCAB Subcommittee
June 19, 2017

DCCPS Organization and Leadership



Statistical Research and Applications

Dr. Eric Feuer, BRANCH CHIEF

DCCPS FY16 Funding Summary

- 668 total grant awards in FY16
- \$378M total funding for DCCPS grants portfolio
- Additional \$128M total funding for operating budget; includes contracts (e.g., SEER Program) and collaborations (Inter-agency Agreements, e.g., CDC, CMS, AHRQ, VA, SSA, Census)
- 45% of DCCPS grants are relevant to health disparities research

Key Components

- SEER Cancer Registries
- SEER-linked Datasets
- Cohorts, Consortia, and Networks
- National Surveys
- Measurement Development and Validation
- Tools to Support Dissemination of Data and Effective Interventions

Key Strategies

- Provide outstanding customer support to investigators
- Support transdisciplinary team science
- Increase availability and usability of data
- Strategically leverage other NCI, NIH, and HHS-supported programs
- Enhance interagency and NGO collaborations
- Maximize input from scientific community

DCCPS Cancer Centers Supplements Initiatives

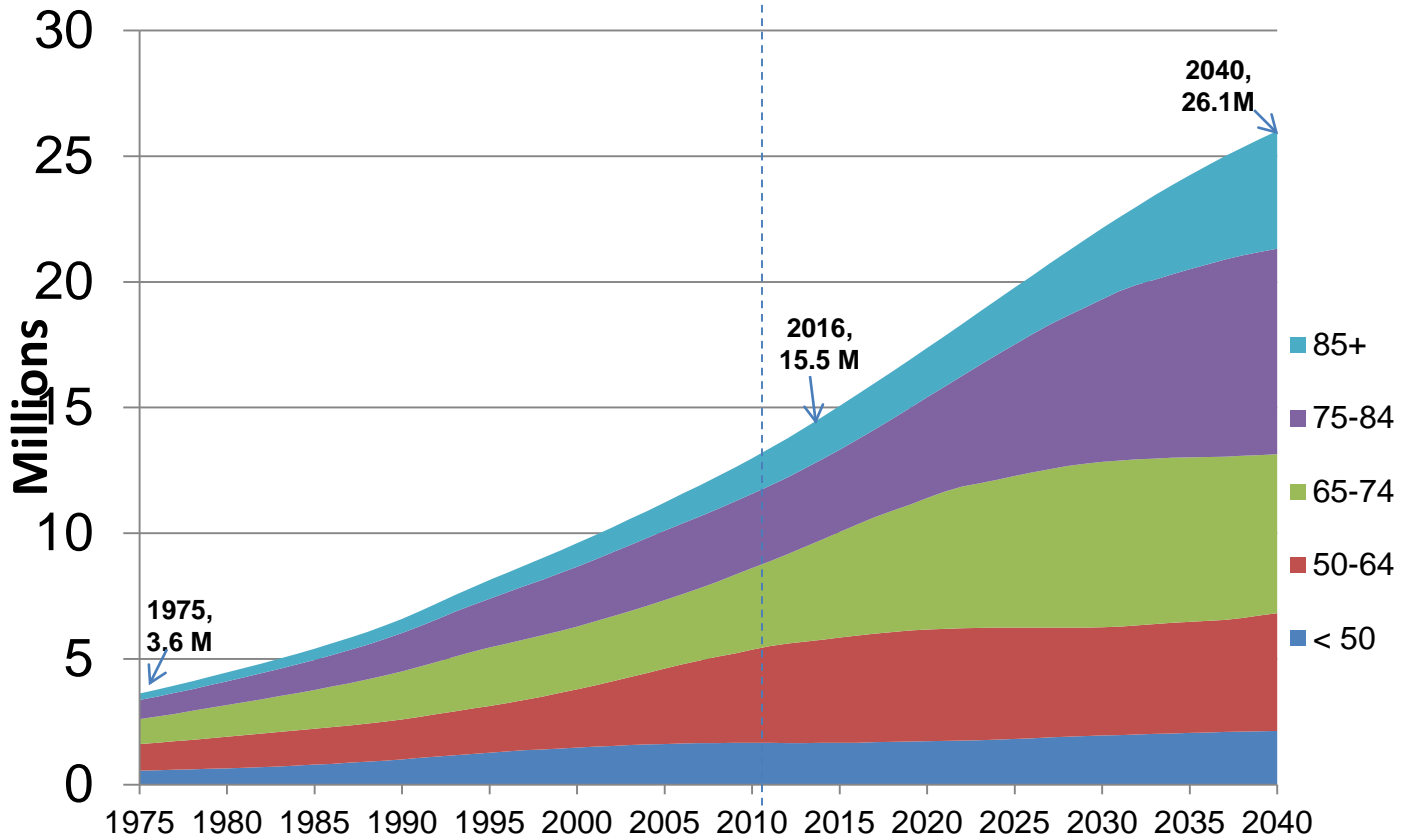
- HPV Vaccination Uptake (FY14 and FY17)
- Population Health Assessment in Cancer Center Catchment Areas (FY16)
- Tobacco Cessation Treatment Capacity and Infrastructure for Cancer Patients
 - FY17 funding with Moonshot dollars
 - Planning for second announcement for FY18 funding

New: Rural Cancer Control

- Kick-off conference call with Doug Lowy and 8 rural populations investigators on April 17, 2016
- *Cancer Currents* Blog on Rural Cancer Control, May 18, 2016
- A Dialogue on Cancer Research in AI/AN Communities – workshop in OKC on November 9, 2016 (Doug Lowy and Tom Cole)
- Rural Cancer Control Workshop – May 4-5, 2017, Memphis, TN
- Commissioned reviews and reports
- Incidence and mortality analyses of the rural/urban difference (CEBP, in press, and MMWR, in press)
- Save the Date! First National Conference on Accelerating Research in Rural Cancer Control, May 30-31, 2018, NIH campus

Estimated prevalence from 1975 to 2040 by age (in millions)

Source: *Bluethmann, Mariotto & Rowland, CEBP July 1, 2016*




----- Signifies the year at which the first baby boomers (those born 1946-1964) turned 65 years old

Co-Leadership on Cancer Moonshot Initiatives

- Symptom Management – Paul Jacobsen and Ann O’Mara
- High-risk Cancers – Kathy Helzlsouer and Asad Umar
- Cancer Prevention and Screening – David Chambers and Paul Pinsky
- Cancer Data Ecosystem – Lynne Penberthy, Warren Kibbe, and Stephen Chanock
- Network for Direct Patient Engagement – Debbie Winn, Helen Moore, and David Patton

Annual Report to the Nation on the Status of Cancer, 1975–2014, Featuring Survival

Ahmedin Jemal , Elizabeth M. Ward, Christopher J. Johnson, Kathleen A. Cronin, Jiemin Ma, A. Blythe Ryerson, Angela Mariotto, Andrew J. Lake, Reda Wilson, Recinda L. Sherman, ... [Show more](#)

J Natl Cancer Inst (2017) 109 (9): djx030.

DOI: <https://doi.org/10.1093/jnci/djx030>

Published: 31 March 2017 [Article history](#) 



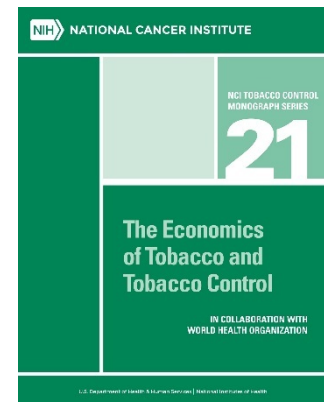
CANCER TRENDS

Progress Report



- Key [measures of progress](#) across the cancer control continuum
- Our nation's progress relative to Healthy People 2020 cancer targets
- Along with data from local/state registries, uses national surveys

- Collaboration between the National Cancer Institute and the World Health Organization
- Examines the current research and evidence base surrounding the economics of tobacco control



Current Challenges and New Investments

Current Challenges	New Investments
Impact of changes in healthcare	Monitor cancer care delivery Focus on rural cancer control
Demand for additional treatment data in SEER	Enhance SEER linkages Examine validity of new data sources
Establish validity of new omics technologies	Support projects in metabolomics, microbiome, and germline-somatic interactions
Understand effects of obesity, nutrition, and physical activity	Planning for TREC III and NIH-level initiatives
Reduce tobacco use in low income populations	Promote new PAs and partnerships

Examples of Scientific Workshops

- August 2016 – Evidence-based approaches for optimizing employment outcomes among cancer survivors
- September 2016 – First national conference on geospatial approaches to cancer control and population sciences
- October 2016 – Human-system integration in cancer care
- December 2016 – Annual conference on the science of dissemination and implementation in health
- December 2016 – Improving investigator capacity to conduct research in healthcare delivery settings
- March 2017 – Studying the human microbiome in prospective studies (w DCEG)
- September 2017 – New R01 investigators workshop

Examples of Recent Webinars

- June 2017 – Opportunities and challenges in survivorship research in adolescents and young adults
- Research to Reality Cyber Seminar Series –Lynch Syndrome, LGTBQ health disparities, supporting cancer survivors through comprehensive cancer control programs, cancer caregiving in the community
- Healthcare Teams Cyber Discussion Series – performance in multidisciplinary teams, interdependent care management across specialties in breast cancer
- 6 Webinars from Aug 2016 – May 2017 on new behavioral research program announcements

Upcoming Webinars

- June 21, 2017 – Lessons learned in the application of next-generation sequencing to pancreatic cancer
- June 22, 2017 – Development of an oncology-specific instrument to measure care coordination
- June 29, 2017 – Epidemiology and perinatal transmission of Kaposi's Sarcoma-associated herpesvirus in sub-Saharan Africa
- July 26, 2017 – Broad consent for research on biospecimens: the views and experiences of actual donors
- July 27, 2017 – Diverse patient values about a library of medical information: EHRs and biospecimens in research
- September 25-26, 2017 – Understanding the role of muscle and body composition in studies of cancer risk and prognosis in cancer survivors