

Cancer Moonshot Scholars Program

RFA-CA-22-050

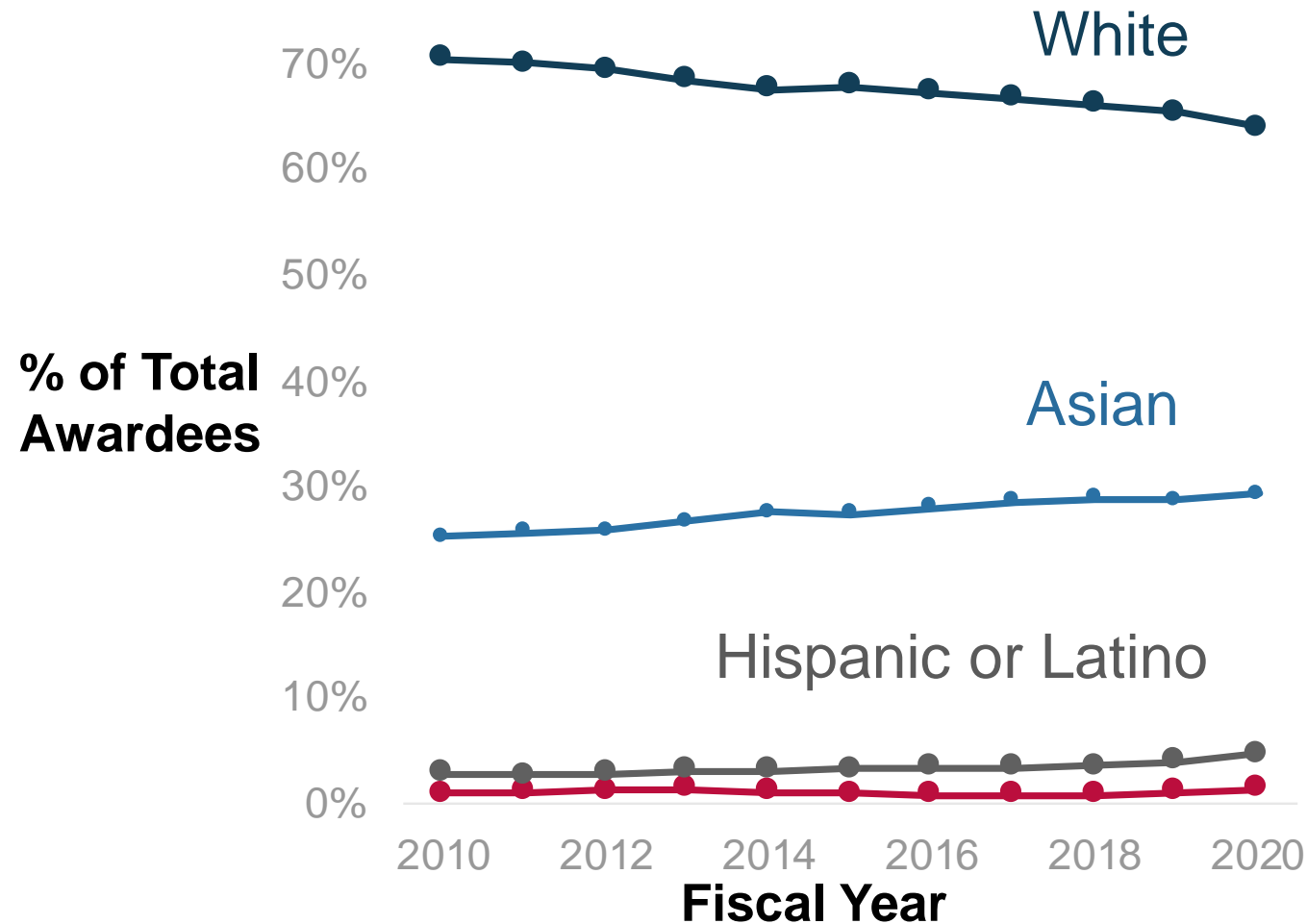
An NCI-Wide Initiative

LeeAnn Bailey, MD, PhD
Tiffany Wallace, PhD

Dec 3, 2024

Trends in NCI R01 and R01 Equivalent Funding

Demographic Trends For Funded NCI R01 Equivalent PIs (FY2010- FY2020)



Between FY10 and FY20:

- Percent of **Black or African American PIs** remained stable at 1%
- Percent of **Hispanic or Latino PIs** increased from 3% to 5%

Black or African American

Data Source: Data from NIH OER with analysis by NCI Center for Research Strategy. *Method:* Percent rounded to nearest 1%. Percentages are calculated using the number of PIs that have self-reported their race or ethnicity (92% of all PIs). Hispanic may be any race; race categories exclude Hispanic origin.

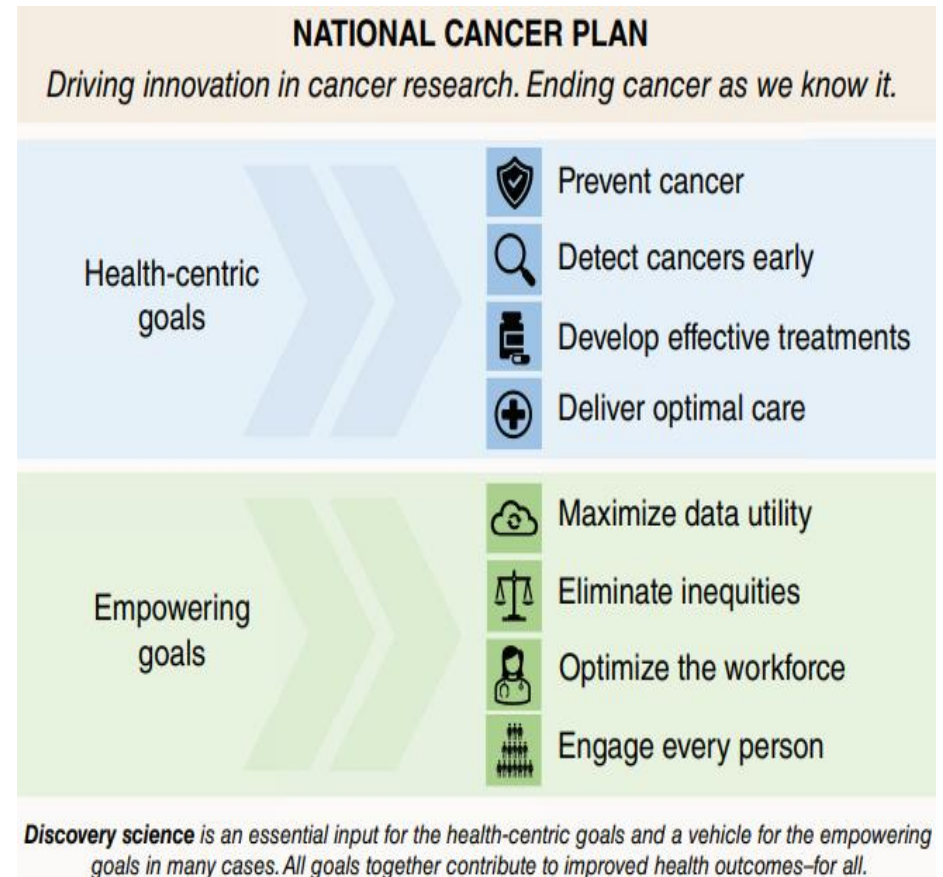
Purpose and Goals

This RFA aligns with the priorities identified by White House's Cancer Cabinet to inspire and support the next generation of diverse cancer researchers:



Goals

- Promote scientific advances in cancer research by increasing diversity of thought and perspective in NCI's funded portfolio
- Support Early-Stage Investigators (ESI)
- To increase the number of funded R01 investigators from URGs across the cancer research continuum
- In accordance with NOT-OD-20-031



Eligibility and Research Scope for RFA-CA-22-050

1. Proposed research must align with the NCI's scientific mission
2. Contact PI must be an Early-Stage Investigator
 - MPI applications are allowed, however, the contact PI must be an ESI
3. Contact PIs must have included an Institutional Eligibility Letter describing their contribution to the RFA goals

NCI Mission and Scope



<https://www.cancer.gov/about-nci/overview>

First Two Cohorts (2023, 2024)

2023 Cohort

- Submission Date: November 8, 2022
- 11 applications awarded, July 2023



2024 Cohort

- Submission Date: June 6, 2023
- 11 applications awarded, July 2024



Research Projects

Cancer sites:

Blood
Brain
Breast
Cervical
Hepatocellular
Lung
Pancreatic
Prostate
Rectal

Approaches/topics:

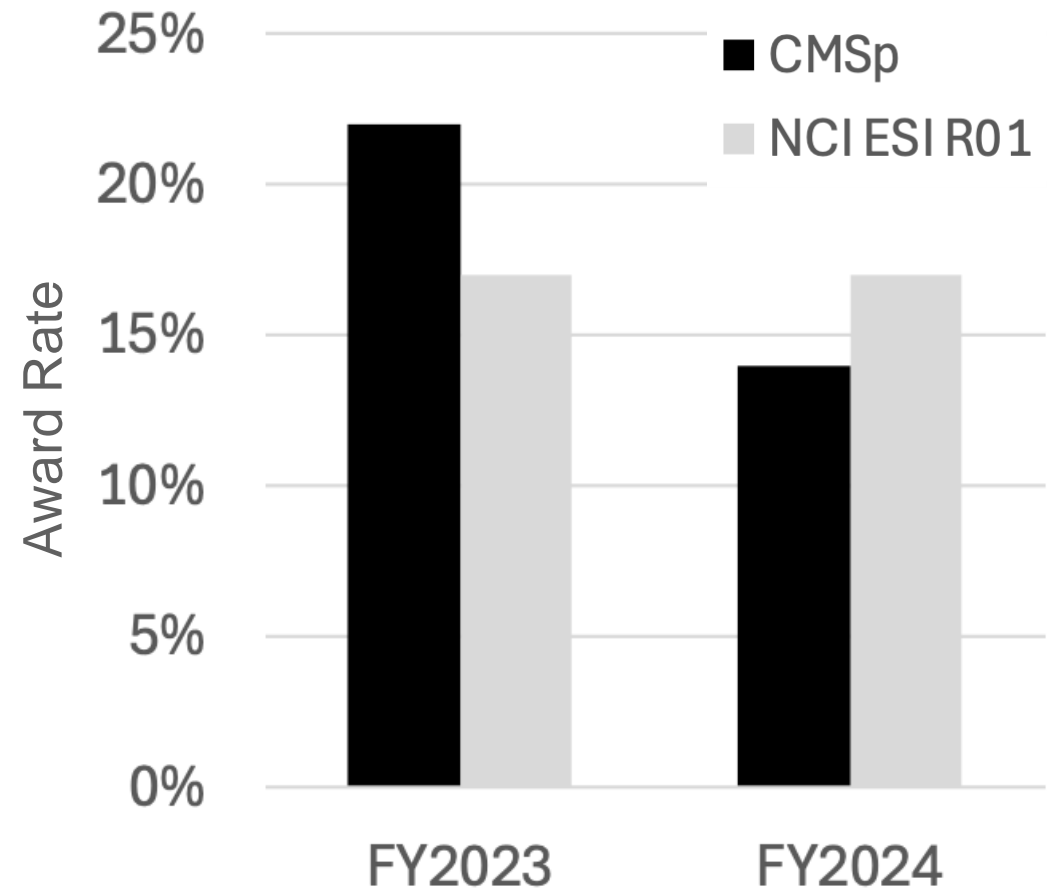
Basic Sciences
Diagnosis/Treatment
Interventional
Implementation Science
Pediatric
Population Sciences
Prevention/Screening

**2025 Cohort
Coming Soon**



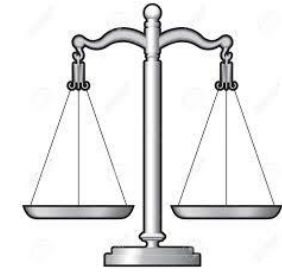
Award rate of CMSp applications compared with the NCI ESI R01 application pool

- Award Rate = Awards/Applications
- The award rate for applications to the CMSp was compared to the award rate for applications from all NCI ESI R01s.
- In FY2024, the CMSp had a lower award rate than all NCI ESI R01 applications due to the large number of applications to the CMSp.



Method: Award rate is the number of total competing awards divided by the total number of applications. Applicants and awardees on competing (type 1, 2, 9) NCI R01 and R37.

Strategy Moving Forward



Revert from using set-aside funds (RFA) to using RPG funds (PAR), where awards are decided based by the R01 payline.

- Applications reviewed through PARs, as opposed to RFAs, will be percentiled, allowing support equivalent to the Parent R01 announcement.
- Critical to retain a review by a Special Emphasis Panel as opposed to a spreading across Standing Study Sections.

Proposed Budget

- A three-year PAR issuance (FY 2026, FY 2027, and FY 2028) is requested to fund new Type 1 R01 awards.
- The reissued PAR will support applications up to the NCI ESI payline.
- Past rounds suggest that the investment would be approximately \$10M (to support 15-17 R01 awards), however this estimate may change according to the type of research proposed in the applications received and the where the ESI payline is set.

Acknowledgements and Thanks

Current CMSp RFA Scientific Program

Contacts:

- Brandy Heckman-Stoddard (DCP)
- Amy Kennedy (DCCPS)
- Richard Moser (DCCPS)
- Leah Hubbard (DCTD)
- Eric Johnson (DCB)
- Sudha Sivaram (OD/CGH)
- Tiffany Wallace (CRCHD)



NCI Leadership:

- Dinah Singer
- Sanya A. Springfield

CMSp Team:

Tiffany Wallace (Co-Lead)
Neeraja Sathyamoorthy
Brian Davis

Collaborators:

Shannon Hughes (WG2 EIP Co-Chair)
Christine Burgess

Eligibility (Based on the NIH Diversity Statement NOT-OD-20-031)

- A. Individuals from racial and ethnic groups that have been shown by the National Science Foundation to be underrepresented in health-related sciences on a national basis
- B. Individuals with disabilities, who are defined as those with a physical or mental impairment that substantially limits one or more major life activities
- C. Individuals from disadvantaged backgrounds.
- D. Women from all of the above backgrounds (categories A, B, and C), who have been shown to face particular challenges at the graduate level and beyond in scientific fields

Eligibility (Continued)

- ESIs from URGs are especially encouraged to apply
- There is no restriction on the type of cancer research proposed. Applications proposing research topics spanning the entire cancer continuum will be considered responsive and aligned with the Parent R01 PA (PA-20-185).
- MPI applications are permissible, however, an investigator from a URG must be designated as the contact PI.
- An Institutional Eligibility Letter must be submitted by the applicant's institution certifying that the applicant is considered to be underrepresented. For the purpose of this RFA, investigators from URGs are defined according to the Notice of NIH's interest in diversity ([NOT-OD-20-031](#)).