

Tobacco, Alcohol, and Cannabis Control Policy Research for Health Equity

*Annette Kaufman, Ph.D., M.P.H.
Margaret Mayer, Ph.D., M.P.H.
Tobacco Control Research Branch
Division of Cancer Control and Population Sciences*

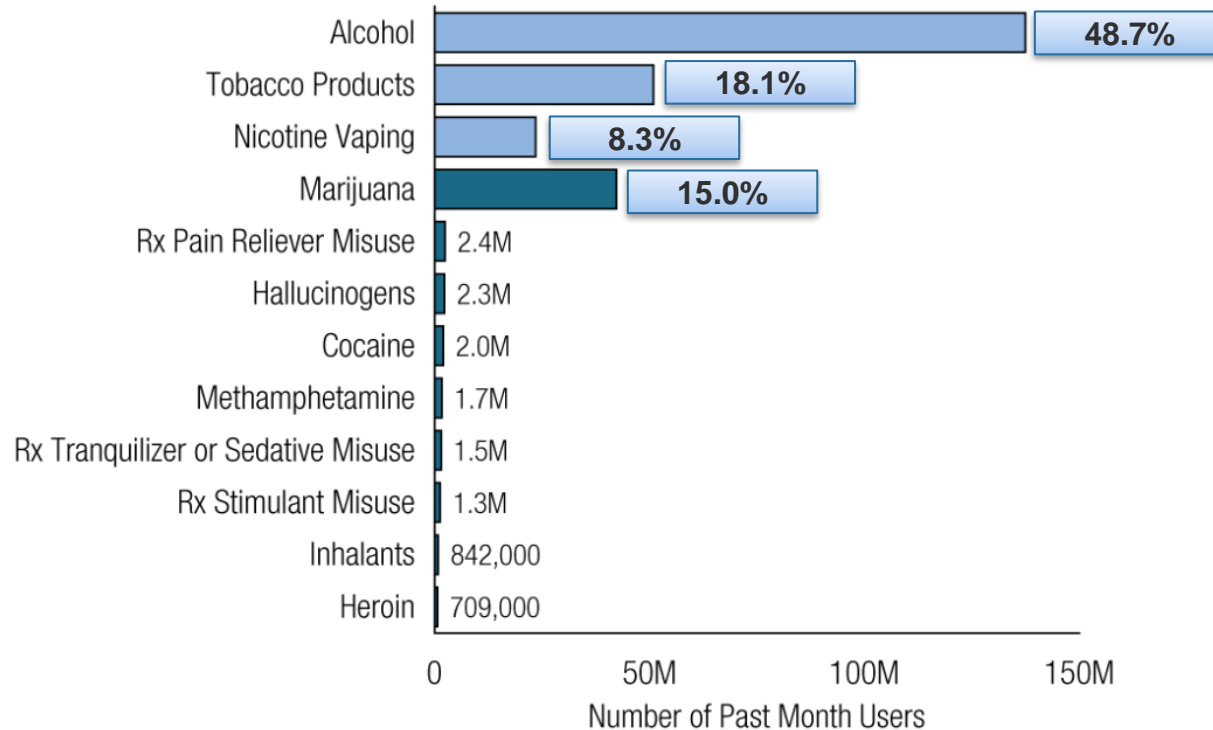
Goal of Funding Opportunities (PARs)

To support R01 and R21 research projects that focus on reducing disparities in tobacco, alcohol, and/or cannabis exposure or use by evaluating new or adapted policies pertaining to tobacco, alcohol, and/or cannabis in the U.S.

Main Research Question

Do tobacco, alcohol, and/or cannabis policies differentially impact the exposure/use of all three substances among disparate populations?

National Survey on Drug Use and Health: Past Month Substance Use (2022)



Among People Aged 12 or Older.

Rx = prescription.

Note: The estimated numbers of current users of different substances are not mutually exclusive because people could have used more than one type of substance in the past month.

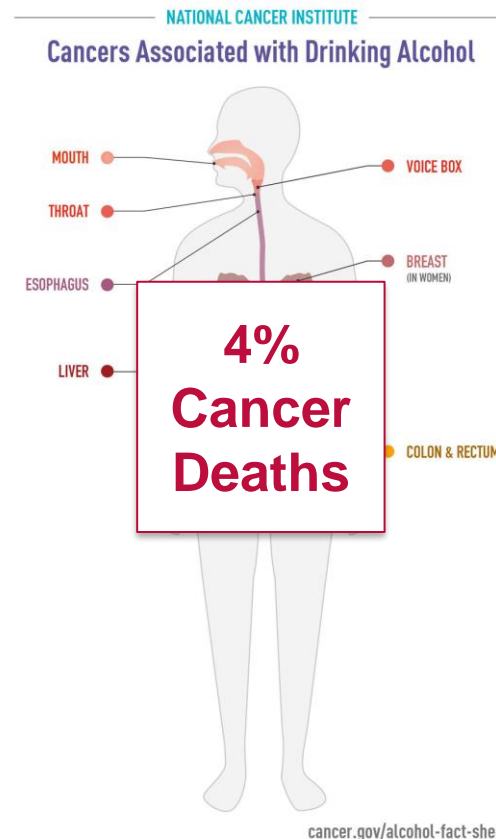
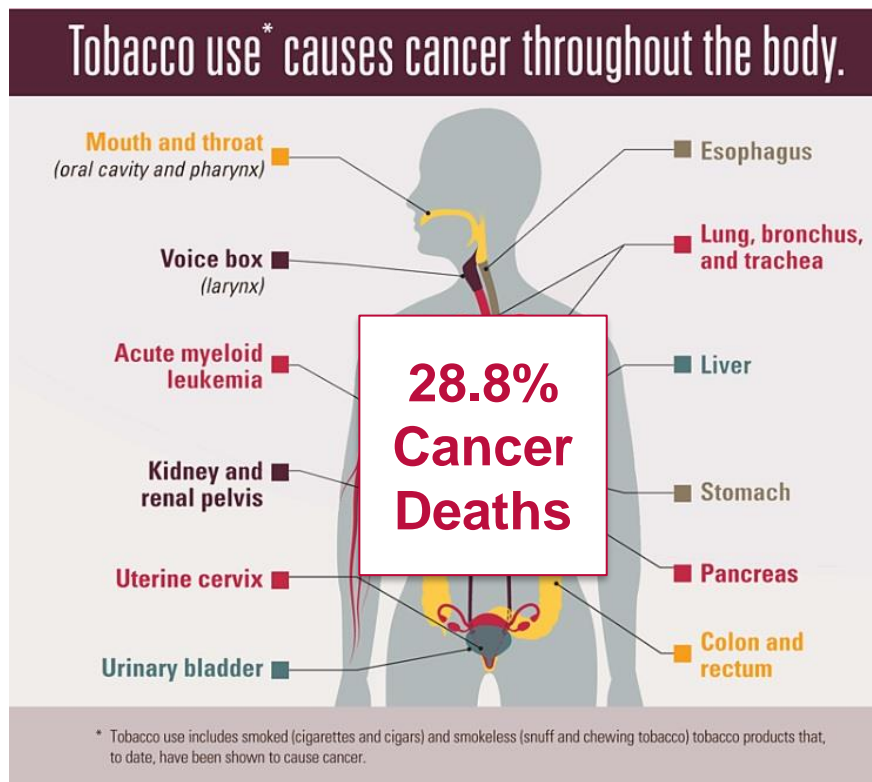
SAMHSA Highlights Tables: <https://www.samhsa.gov/data/sites/default/files/reports/rpt42731/2022-nsduh-main-highlights.pdf>

National Survey on Drug Use and Health: Proportion of Adult Past Month Alcohol, Cigarette, and Cannabis Use (2015-2019)

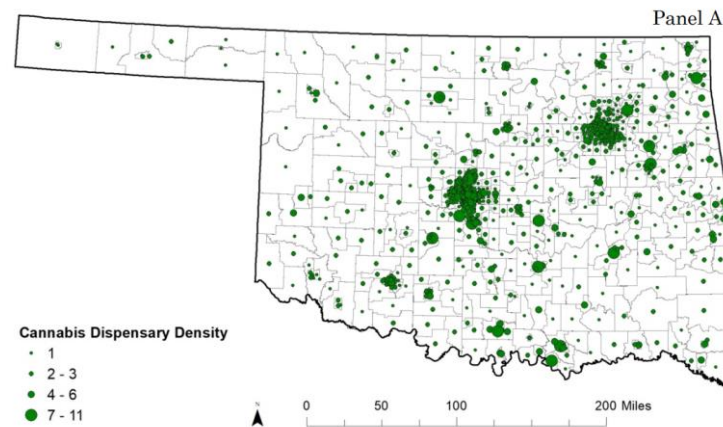
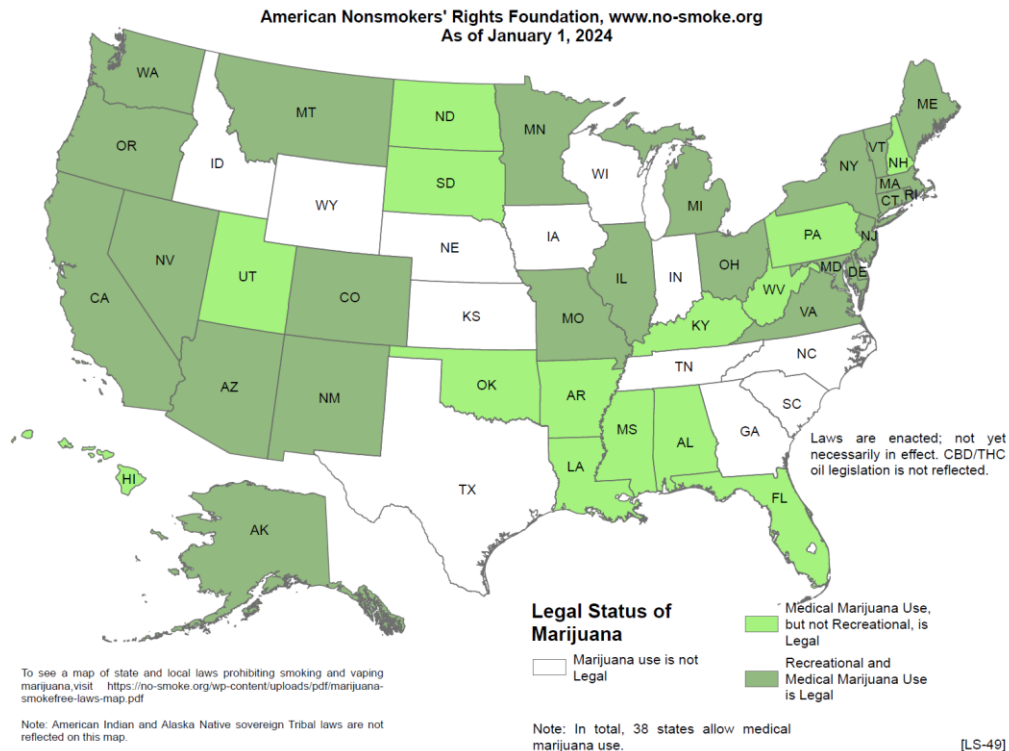
Substance(s)	2015	2016	2017	2018	2019	Probability	Trend
Alcohol	39.04	38.34	39.65	38.83	38.28	0.382	NC
Alcohol & Cigarettes	9.99	9.65	8.43	8.02	7.43	0.000	↓
Alcohol, Cigarettes & Cannabis	3.54	3.38	3.61	3.56	3.75	0.139	NC
Alcohol & Cannabis	3.27	3.73	4.18	4.67	5.40	0.000	↑
Cigarettes	6.52	6.61	6.34	6.18	5.73	0.001	↓
Cigarettes & Cannabis	0.97	1.03	1.01	1.02	1.32	0.003	↑
Cannabis	0.67	0.91	0.96	1.19	1.39	0.000	↑
No use of any	36.00	36.35	35.81	36.52	36.70	0.160	NC

DCCPS, Unpublished

Substance Use and Cancer



Rapid Policy Change Example: States with Legalized Smoking and/or Vaping of Cannabis



Policy

- Policies and Health Equity
 - ⊕ promoting health equity, reducing health disparities
 - ⊖ unanticipated/unintended/negligent, worsening health disparities
- Policy aimed at one substance may affect other substances through co-use or substitution.

Research needs to evaluate the health equity impact of policies—whether promising new policy approaches needing validation, existing policies needing further examination, or forthcoming policies needing real-time evaluation—on use of all three substances.

Research Questions

One or More

Exposure/Use

Tobacco Policy

Alcohol Policy

Cannabis Policy

Tobacco

Alcohol

Cannabis

- One or more NIH-designated populations experiencing disparities in the U.S.
- In partnership with a community organization

Response to BSA Review Committee (Hatsukami, Osarogiagbon, and Mustian)

- Carcinogenic substances
 - Impact of policy on substance use for cancer prevention
- Community Partnership Component
 - Examples of community engagement
 - Encourage workforce development plan
 - Encourage expectation of community involvement from conception to dissemination
 - Dissemination to community partners as appropriate

Response to BSA Review Committee (Hatsukami, Osarogiagbon, and Mustian)

- Encourage consideration of context
 - Potential moderators such as other policies (+/-), policy enforcement, methods of product use, etc.
- Required Dependent Variable: Substance Exposure or Use
 - Will clarify within the “all projects must include” section and within the review criteria as appropriate
 - Optional dependent variable: health outcomes

Response to BSA Review Committee (Hatsukami, Osarogiagbon, and Mustian)

- Special Review Criteria
 - Dissemination: Is the dissemination plan appropriate for the research question and the nature of the results?
 - NIH definition of populations with health disparities
 - Investigator will define the population of interest and significance
 - Encourage examination of intersectionality

Thank you!



**NATIONAL
CANCER
INSTITUTE**

www.cancer.gov

www.cancer.gov/espanol