

Commencing the Journey

Scientific Training in Addiction Research Techniques (START)

Micah E. Johnson

MicahJohnson@usf.edu



Disclosures

The National Institutes of Health supported the START program under award number **R25** DA059073 (MPIs: Potter, Johnson, Garavan). The content is solely the responsibility of the authors and does not necessarily represent the official views of the National Institutes of Health.

Outline



BACKGROUND



RECRUITMENT



TRAINING



DISSEMINATION



IMPACT



Background

- Underrepresentation
- Barriers and potholes

START Overview

START aims to:

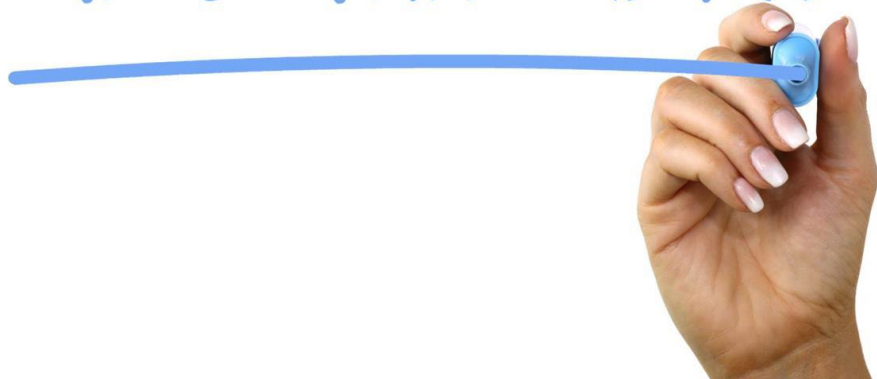
- Recruit BIPOC scholars
- Train fellows to access, analyze, and disseminate ABCD data
- Facilitate mentored independent research studies

Five pillars

- 1) Recruitment
- 2) Enrichment
- 3) Training
- 4) Effective mentoring
- 5) Nourishing environments

Recruitment

RECRUITMENT



- Targeted Recruitment
- Talent Acquisition Techniques
- Networks

The Pilot Cohort





Scientific Training in Addiction
Research Techniques

Training



Phase I

1-week Intensive Orientation & Training Conference

Phase II

Monthly 2-hour Group Sessions

Phase III

3-day Dissemination & Professional Development Conference

Orientation & Training Conference UVM





Challenges & Solutions for URM Scholars Form

Describe unique challenges, barriers, or issues that you have experienced or may experience in academia, specifically regarding your race/ethnic or gender identity. Describe potential solutions to overcome each challenge that has been identified. Discuss with your Group A members.

Challenges

Solutions

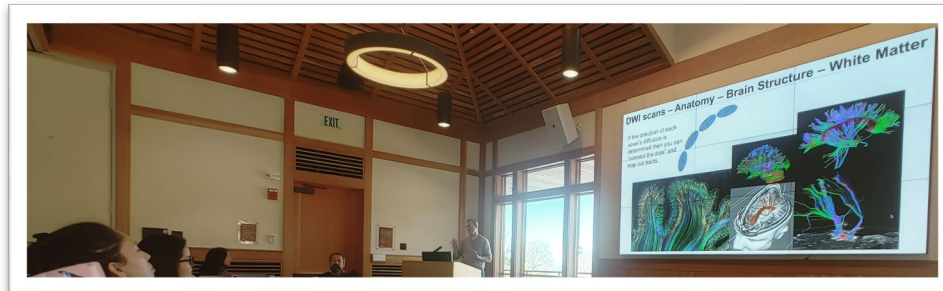
Challenges Experienced or Witnessed


Potential Challenges



Challenges & Solutions

Research Project Development



START 
Accelerating Brain Cognitive Development

Research Form

1. **Research Question**
2. **Hypothesis**
3. **Variables**
4. **Analytical Techniques**
5. **Potential Findings and Implications**

ABCDStudy.org 24

Mentorship Training: Mentor Panels





Mentee Panels



One-on-One Mentorship



Workgroups



Community



Monthly START Sessions



Monthly START Sessions

Group meeting

Community-building activities

One-on-one mentorship

Individual presentations

Group open discussions

Dissemination



NIH GRANT WRITING TRAINING BY NIH NIDA OFFICERS

Alexa R. Romberg, Ph.D.

Program Officer
Prevention Research Branch, Division of Epidemiology,
NIH National Institute on Drug Abuse



Dharmendar Rathore, Ph.D.

Branch Chief
Scientific Review Branch
NIH National Institute on Drug Abuse



Traci M. Murray, Ph.D.

Scientific Advisor for JEDI in ABCD and HBCD Studies
Division of Extramural Research
NIH National Institute on Drug Abuse



Gaya Dowling, Ph.D.

Director of the ABCD Project
Division of Extramural Research
NIH National Institute on Drug Abuse



Phase 3: START Dissemination Conference

Evaluation

Q2 - Please write a statement describing the best aspects of the START Spring Conference in Vermont. You may make an enumerated list to save time.

Please write a statement describing the best aspects of the START Spring Conference in Vermont. You may make an enumerated list to save time.

I really enjoyed the bonding opportunities we had, including the 8-4 day sessions, sleighing, bowling, and dancing at Hugh's house. I also enjoyed the constant validation of our brilliance and bring surrounded by astounding and brilliant other trainees. I think that the program's structure was strong, despite its relative intensity. I also really liked the pairing with mentors that were genuinely invested in our success.

1. Guidance in navigating the ABCD dataset; 2. Providing overview of study procedures and instrument battery; 3. Community building activities with diverse scholars. 4. Connection to multiple mentors that are well established in the field; 5. Excellent hosting, including invitation to Dr. Garavan's house. I'll also add that I thought it was extremely important to have Someone like Dr. Micah Johnson there as an all around support, and navigator.

Community from mentors and mentees, genuine and compassionate care from mentors, mentors actually listened to project ideas, mentors had patience, the conference built community first before worrying about projects, mentors believe in the trainees, there was a sense of family with everyone but especially with the mentees, collaborative environment, Micah asked what I need to be successful. that was first time anyone has ever asked, Nick was incredibly patient with the DUC situation lol, I feel like we as trainees really have champions to depend on in our future, social times sleigh and bowl was also great!!!

The challenge, support, bonding, interdisciplinary

The support and validation from START PI's was amazing from start to finish, the community building that happened during the day sessions and the activities that followed like sleigh riding, snowball fight, bowling, and dancing at Hugh's house was amazing. I appreciate the extended network i now have. I liked the group breakdowns and being able to connect with different people intimately. The support from mentors who know the data and were willing to continue helping after the week was great to know. I also enjoyed the hotel very much. The programs structure for the week was smooth and efficient despite the busy-ness of it.

The best part of the START program was being in a room with scientists who I would never believe I'd be able to come be in the room with. The START program provided me with a space to develop relationships with those I'd otherwise be too nervous to interact with and for that I am eternally grateful!

the people. I haven't been this inspired in a long while

1. A safe space to be vulnerable. 2. The amount of on-site ground support from mentors and mentees. 3. The structured schedule that was followed by the book. 4. The activities that were scheduled for us to participate in. 5. The transportation and lodging which made things comfortable and easy.

1. Mentor presence 2. Access to resources 3. Validation 4. Uplift 5. Glimpse behind the curtain

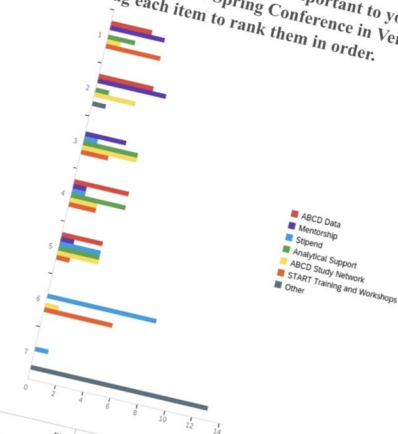
1. Community, 2. The authentic presence of the admin team, Director from NIDA, and mentors, 3. Planned time in the data and with mentors, 4. Ongoing time to achieve objectives

The mentors were very approachable and down to earth. The energy created a safe space and was conducive to being vulnerable to acknowledge gaps in knowledge and seek support to fill them.

1. Community, 2. Empowerment 3. Accountability

1) validation 2) inclusion 3) training 4) networking 5) mentoring

Q7 - Which of these were most important to you after attending the START Spring Conference in Vermont? Please drag each item to rank them in order.



| Item | Field | Minimum | Maximum | Mean | Std. Deviation | Variance | Count |
|------|------------------------------|---------|---------|------|----------------|----------|-------|
| 1 | ABCD Data | 1.00 | 5.00 | 3.00 | 1.51 | 2.29 | 14 |
| 2 | Mentorship | 1.00 | 5.00 | 2.29 | 1.16 | 1.35 | 14 |
| 3 | Stipend | 3.00 | 7.00 | 5.50 | 0.98 | 0.96 | 14 |
| 4 | Analytical Support | 1.00 | 5.00 | 3.36 | 1.29 | 1.66 | 14 |
| 5 | ABCD Study Network | 1.00 | 6.00 | 3.43 | 2.04 | 4.17 | 14 |
| 6 | START Training and Workshops | 1.00 | 6.00 | 3.79 | 1.29 | 1.66 | 14 |
| 7 | Other | 2.00 | 7.00 | 6.64 | 1.29 | 1.66 | 14 |

| Question | 1 | 2 | 3 | 4 | 5 | 6 | 7 | Total |
|----------|------------------------------|--------|--------|--------|--------|--------|-------|-------|
| 1 | ABCD Data | 21.43% | 32.86% | 42.14% | 42.14% | 0.00% | 0.00% | 0 |
| 2 | Mentorship | 28.57% | 35.71% | 52.14% | 7.14% | 7.14% | 0.00% | 0 |
| 3 | Stipend | 0.00% | 0.00% | 0.00% | 7.14% | 7.14% | 0.00% | 0 |
| 4 | Analytical Support | 14.29% | 7.14% | 7.14% | 7.14% | 7.14% | 7.14% | 1 |
| 5 | ABCD Study Network | 7.14% | 21.43% | 28.57% | 42.14% | 35.71% | 7.14% | 1 |
| 6 | START Training and Workshops | 28.57% | 42.14% | 14.29% | 21.43% | 0.00% | 0.00% | 0 |
| 7 | Other | 0.00% | 7.14% | 0.00% | 0.00% | 0.00% | 0.00% | 0 |

week embodied authentic mentorship, collaboration, and shared opportunities for those of us who often feel forgotten, undervalued, and invisible. You cultivated safety and reinforced our value this week creating a community of scientists who will flourish.

me into a group of intelligent, like-minded, minoritized researchers who I now consider my "science family". With this new family that you've allowed us to build, I feel supported, inspired, and more confident in navigating the intimidating academic world we're working in -

year program, I had not only access to the data, hands-on training, and knowledge on data collection. But also, and utter importantly, I had the chance to become part of this brilliant community. I had a profound sense of belonging this week, which I rarely experienced

Next Steps

Recruitment

Dissemination

Refining the program

Expanding

Impact

- Enhancing the ABCD Community
 - Scientific Innovation
 - Contagious Magic
-



Acknowledgments

- NIDA
- Dr. Gaya Dowling
- Dr. Marsha Lopez
- Co-MPIs
 - Dr. Alexandra Potter
 - Dr. Hugh Garavan
- ABCD Consortia
- Dr. Albert Avila

Thank you!





Scientific Training in Addiction
Research Techniques