

NCI Director's Report

Norman E. Sharpless, M.D.

*1st Virtual Joint Meeting of NCI Board of Scientific
Advisors & National Cancer Advisory Board*

April 9, 2020

@NCIDirector
@TheNCI

Today's Meeting

Deputy Director's Report – *Dr. Doug Lowy*

Update: NYU Coronavirus Activity – *Dr. Dafna Bar-Sagi*

Clinical Trial Policies – *Dr. James Doroshow*

Closed Session: Discussion of Research Efforts – *Dr. Dinah Singer*

NCI & COVID-19

- Today's discussion is focused on SARS-CoV-2 and COVID-19
- We will discuss the impact of the pandemic on NCI and the extramural community.
- COVID-19 has affected everything we do at NCI. We've adapted how we do business, and we're embracing opportunities to contribute to COVID research.
- Cancer research and cancer care remain JOB #1 at NCI.
- Even during these difficult times, we are still making progress toward our mission of reducing cancer suffering

NCI & COVID-19

Intramural Research Program

Leaders in virology research

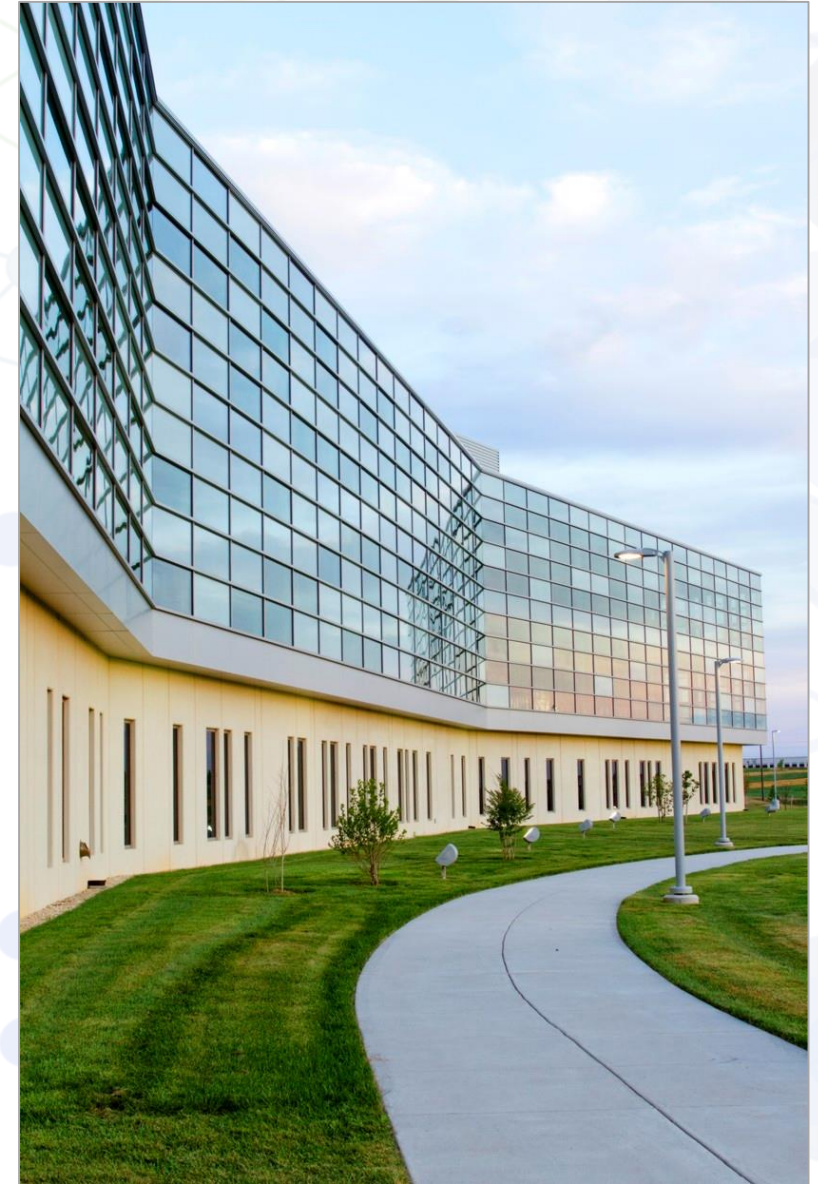
- *Lowy, Schiller, Varmus, Gallo, Broder*

Frederick National Laboratory for Cancer Research

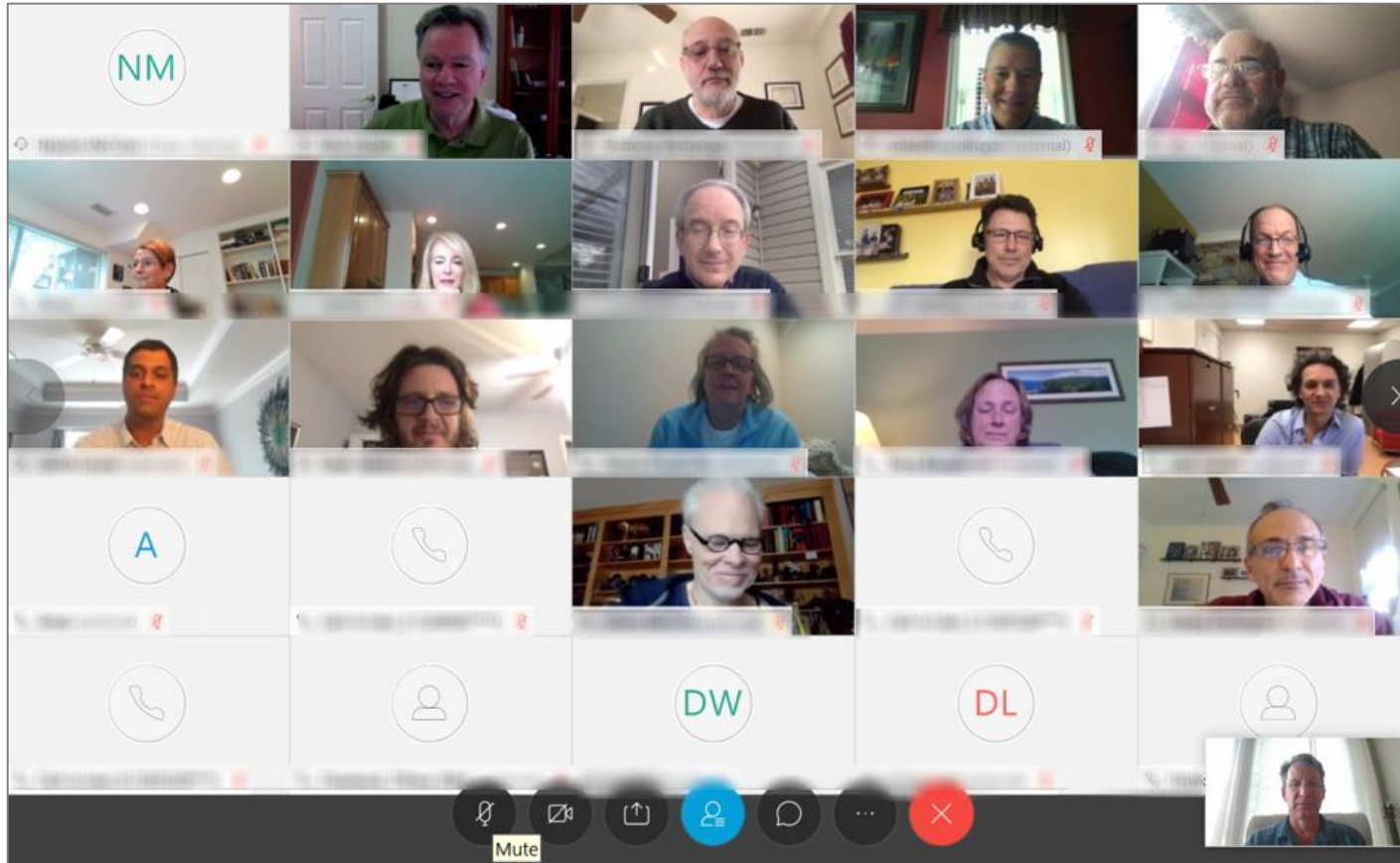
- *Facilities: CryoEM, Serology, more*
- *Unique contracting authorities*
- *Robust collaborative relationships*

Grantee Institutions and Networks

diverse skills and powerful technology




NCI Operations: Telework, *Minimal Maintenance*, Critical Clinical Care



Cancer Information Service | 1-800-4-CANCER

Contact Us for Help

 Call 1-800-4-CANCER


(1-800-422-6237)

Mon - Fri

9 a.m. to 9 p.m. ET

 Email Us

NCInfo@nih.gov

 Live Chat

LiveHelp

Mon - Fri

9 a.m. to 9 p.m. ET



Information for people with cancer

The screenshot shows the National Cancer Institute website. At the top left is the NIH logo and the text "NATIONAL CANCER INSTITUTE". On the right, there is a link for "Español". Below this is a dark blue navigation bar with links for "1-800-4-CANCER", "Live Chat", "Publications", and "Dictionary". A secondary navigation bar contains links for "ABOUT CANCER", "CANCER TYPES", "RESEARCH", "GRANTS & TRAINING", "NEWS & EVENTS", and "ABOUT NCI", along with a search bar and a magnifying glass icon. Below the navigation is a breadcrumb trail: "Home > Contact Us for Help > Emergency Resources". On the right side of the page, there are icons for accessibility (AA), printing, email, and social media (Facebook, Twitter, Pinterest). The main content area features a "CONTACT US FOR HELP" sidebar with a highlighted "Coronavirus Information for Patients" link. The main heading is "Coronavirus: What People with Cancer Should Know". Below the heading is a section titled "ON THIS PAGE" containing a list of seven bullet points.

NIH NATIONAL CANCER INSTITUTE

Español

1-800-4-CANCER Live Chat Publications Dictionary

ABOUT CANCER CANCER TYPES RESEARCH GRANTS & TRAINING NEWS & EVENTS ABOUT NCI search

Home > Contact Us for Help > Emergency Resources

AA [print] [email] f [twitter] [pinterest]

CONTACT US FOR HELP

Emergency Resources

Coronavirus Information for Patients

Coronavirus Information for Researchers

Coronavirus: What People with Cancer Should Know

ON THIS PAGE

- What is coronavirus, or COVID-19?
- If I have cancer, am I at higher risk of getting or dying from COVID-19?
- If I have cancer, how can I protect myself?
- I receive cancer treatment at a medical facility. What should I do about getting treatment?
- I participate in a clinical trial at a medical facility. What should I do?
- What should I do if I have symptoms of an infection?
- What if I have additional questions?

Information for Grantees

NIH NATIONAL CANCER INSTITUTE

CONTACT US FOR HELP

Emergency Resources

Coronavirus Information for Patients

Coronavirus Information for Researchers

Coronavirus: Guidance for Cancer Researchers

COVID-19 is affecting daily life around the globe, but the National Cancer Institute (NCI) remains committed to sustaining progress against cancer. NCI and the National Institutes of Health (NIH) are taking affirmative steps to help inv...

The followi...

ON THIS PAGE:

- Extra
- Clinic
- Intra

- grants.nih.gov
- grantspolicy@nih.gov
- cancer.gov/coronavirus-researchers

NCI Bottom Line

NIH GRANTS & FUNDING
NIH Central Resource for Grants and Funding Information

Coronavirus Disease 2019 (COVID-19): Information for NIH Applicants and Recipients NIH Funding

Cancer Research Training in the Era of COVID-19

CORONAVIRUS DISEASE 2019 (COVID-19) Information for Applicants and Recipients

Dr. Oliver Bogler

Dr. Oliver Bogler, director of the Center for Cancer Training (CCT), discusses the challenges the COVID-19 pandemic is taking on the cancer research training community, and advises trainees on how to manage their portfolio and networks. If you are a research mentor reading this, please share this blog with your trainees.

NIH Guidance for Grantees

- Extended deadlines for applications, no justification required
- Use of NIH grant funds for salaries and stipends
- Flexibility regarding project extensions and accommodating unanticipated costs
- Extensions of post-award reporting requirements
- Numerous flexibilities regarding expenditures of funds
- Extensions for early stage investigator eligibility due to COVID-19-related disruptions will be considered
- NIH will be flexible with extending time constraints for fellowship, career development, and training awards, including phased awards

Leadership Update



Daniel Gallahan, Ph.D.
Director, Division of Cancer Biology

House Appropriations Labor-HHS Subcommittee Hearing FY 2021 NIH Budget Request - March 4, 2020

- Participated alongside Dr. Collins, and IC Directors from NIAID, NHLBI, NIDA, and NICHD
- 8 questions including from the Chair and Ranking Member
- Topics included NCI's increase in applications, CCDI update, clinical trials, and kidney cancer
- Senate budget hearing postponed indefinitely as Congress determines next steps in Appropriations process during COVID-19



Legislative Updates: Three Aid Packages to Address COVID-19

Phase 1 (March 3rd)

- \$8.3B in funding for health agencies – vaccine development and testing, plus small business loan subsidies (\$2.2B to CDC, \$836M to NIAID & NIEHS)

Phase 2 (March 18th)

- \$100B in tax credits for employers offering paid sick leave, increases to unemployment benefits, and food assistance

Phase 3: CARES Act (March 27th)

- Largest stimulus in U.S. history - \$2 trillion in loans and support for industry and small business
- \$130B in aid for hospitals, doctors, nurses, and health centers
- \$4.3B to CDC, \$945.5M to NIH (NIAID, NHLBI, NIBIB, NCATS, NLM, NIH OD), \$80M to FDA
- Telehealth flexibilities, coverage of diagnostics and preventive services for COVID-19
- Direct payments to individuals, unemployment benefits, student loan deferral, election adjustments



Progress in Cancer Research

CD33 CAR T Trial

Study of Anti-CD33 Chimeric Antigen Receptor-Expressing T Cells (CD33CART) in Children and Young Adults With Relapsed/Refractory Acute Myeloid Leukemia

ClinicalTrials.gov Identifier: NCT03971799

Principal Investigators:

- Nirali Shah, MD, MHSc, NCI
- Richard Aplenc, MD, PhD, Children's Hospital of Philadelphia



**Frederick National Laboratory
for Cancer Research**

sponsored by the National Cancer Institute

Steps per day and all-cause mortality

NCI Press Release

Higher daily step count linked with lower all-cause mortality

Posted: March 24, 2020

Contact: NCI Press Office
240-760-6600

In a new study, higher daily step count was associated with lower mortality from all causes. The research team included investigators from the National Cancer Institute (NCI) and the National Institutes of Health (NIH), both parts of the National Institutes of Health, as well as from the Centers for Disease Control and Prevention (CDC), also found that higher steps a person takes each day and the intensity of stepping, had a significant association with mortality.

The findings were published March 24, 2020, in the *Journal of the American Medical Association*.

JAMA | Original Investigation

Association of Daily Step Count and Step Intensity With Mortality Among US Adults

Pedro F. Saint-Maurice, PhD; Richard P. Troiano, PhD; David R. Bassett Jr, PhD; Barry I. Graubard, PhD; Susan A. Carlson, PhD; Eric J. Shiroma, ScD; Janet E. Fulton, PhD; Charles E. Matthews, PhD

Selumetinib & NF1

In NIH trial, selumetinib shrinks tumors, provides clinical benefit for children with NF1

Posted: March 18, 2020

Contact: NCI Press Office
240-760-6600

THE NEW ENGLAND JOURNAL OF MEDICINE

ORIGINAL ARTICLE

Selumetinib in Children with Inoperable Plexiform Neurofibromas

A.M. Gross, P.L. Wolters, E. Dombi, A. Baldwin, P. Whitcomb, M.J. Fisher, B. Weiss, A.R. Kim, M. Bornhorst, A.C. Shah, S. Martin, M.C. Roderick, D.C. Pichard, A. Carbonell, S.M. Paul, J. Therrien, O. Kapustina, K. Heisey, D.W. Clapp, C. Zhang, C.J. Peer, W.D. Figg, M. Smith, J. Glod, J.O. Blakeley, S.M. Steinberg, D.J. Venzon, L.A. Doyle, and B.C. Widemann

al trial show that
s outcomes for
rder
) In the trial,
able tumors that
orm
xperienced
on, and better
iving the
y intramural
Cancer Research
nstitute (NCI), part
of the National Institutes of Health. Results of the
trial were published March 18, 2020, in the *New
England Journal of Medicine*.



Dr. Brigitte Widemann with Travis Carpenter, who received selumetinib for NF1 at NIH.
Credit: National Cancer Institute

Metabolism & metastasis

[Home](#) > [News & Events](#) > [Cancer Currents Blog](#)

Changes in Metabolism Help Melanomas Spread

nature

Article | Published: 18 December 2019

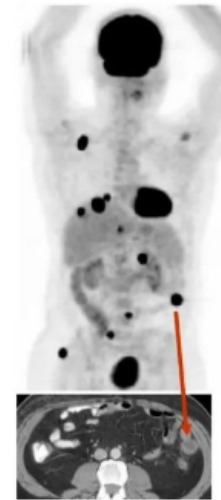
Metabolic heterogeneity confers differences in melanoma metastatic potential

Alpaslan Tasdogan, Brandon Faubert, Vijayashree Ramesh, Jessalyn M. Ubellacker, Bo Shen, Ashley Solmonson, Malea M. Murphy, Zhimin Gu, Wen Gu, Misty Martin, Stacy Y. Kasitnon, Travis Vandergriff, Thomas P. Mathews, Zhiyu Zhao, Dirk Schadendorf, Ralph J. DeBerardinis  & Sean J. Morrison 

skin cancer, can be treated if it's caught early. But once it's spread to other parts of the body, it's highly lethal.

Researchers provide important insights into why some melanomas are more likely to spread, or metastasize, than others. Their research showed that melanoma cells more likely to metastasize if they have a higher level of a transporter protein called MCT1.

The ability to take up and use glucose, which increases their survival. This altered metabolism, researchers found, helps melanoma cells survive as they travel to form secondary tumors.



PET/CT scan of a patient with metastatic melanoma.

Credit: J Transl Med. March 2008.

<https://doi.org/10.1186/1479-5876-6-12>. CC BY 4.0.

Discussion