



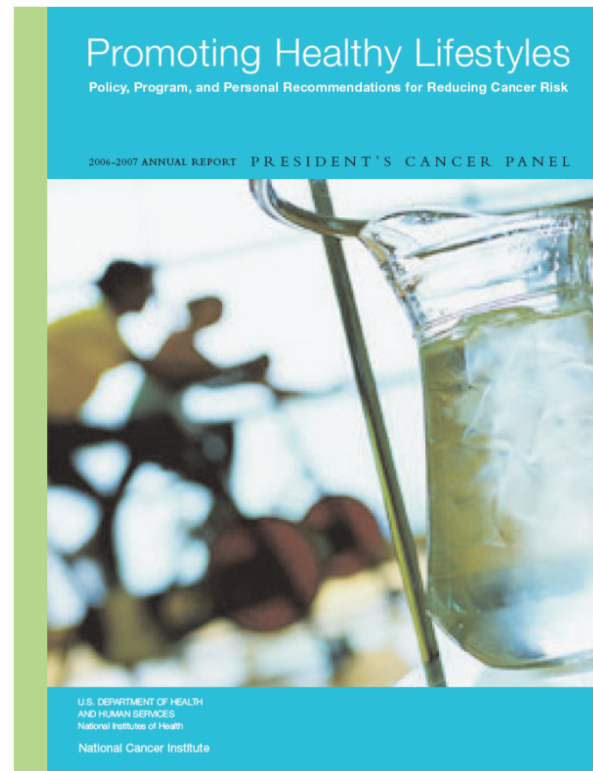
President's Cancer Panel Update

**National Cancer Advisory Board
February 6, 2008**

LaSalle D. Leffall, Jr., MD, FACS, Chair



2006-2007 Report



Promoting Healthy Lifestyles: Policy, Program, and Personal Recommendations for Reducing Cancer Risk



2007-2008 Meeting Series

Strategies for Maximizing the Nation's Investment in Cancer

- September 10, 2007 Atlanta, GA
- October 22, 2007 San Diego, CA
- December 3, 2007 San Juan, PR
- January 28, 2008 New Orleans, LA



Common Themes

- Role of NCI in the nation's cancer enterprise
- Patient-centered cancer research and care
- Coordination across the cancer enterprise
- Innovative scientific discovery
- “Follow the evidence” – apply what is known



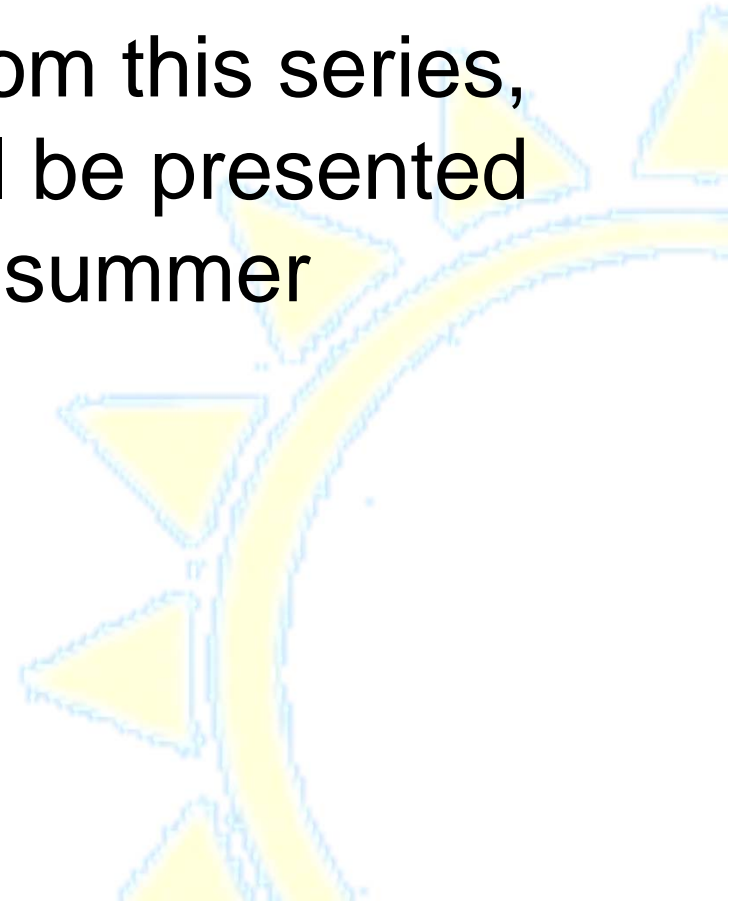
Common Themes

- Access to quality cancer care for all
- Smoking cessation and prevention
- Regulatory barriers
- Technology development and application
- Workforce issues
- Sharing knowledge and resources
- Strong leadership
- Need for unified message/vision



Annual Report

- The Panel is in the process of preparing its final conclusions and recommendations from this series, and a final report will be presented to the President this summer





2008-2009 Meeting Series

Environmental Factors in Cancer

- September 16, 2008 New Jersey
- October 21, 2008 TBA
- December 4, 2007 Charleston, SC
- January 27, 2009 Reno, NV

Focus

- Cancer-causing pollutants found in:
 - Air – indoor and outdoor pollution
 - Soil
 - Food
 - Water

} Pesticides, herbicides, chemical
plant run off

- Workplace exposure – arsenic, asbestos, job specific chemical use, cadmium
- Other - nuclear fallout, electromagnetic fields, and radiation exposure



Possible Outcomes

- Determine the role of NCI as it relates to environmental causes of cancer
- Identify research needs and potential new areas of collaboration between Federal agencies
- Increase public awareness of environmental and occupational hazards
- Develop recommendations for:
 - regulating toxic and other potentially hazardous chemicals and materials
 - reducing exposure to cancer-causing pollutants



Contact Information

President's Cancer Panel
6116 Executive Blvd
Suite 212, MSC 8349
Bethesda, MD 20814-8349
301.451.9399
pcp-r@mail.nih.gov
<http://pcp.cancer.gov>