



*Impact of the Implementation of the  
Operational Efficiency Working Group (OEWG)  
Report on the Clinical Trials System*

CTAC Meeting  
November 30, 2012

Meg Mooney, MD  
Chief, Clinical Investigations Branch  
CTEP, Division of Cancer Treatment and Diagnosis  
National Cancer Institute

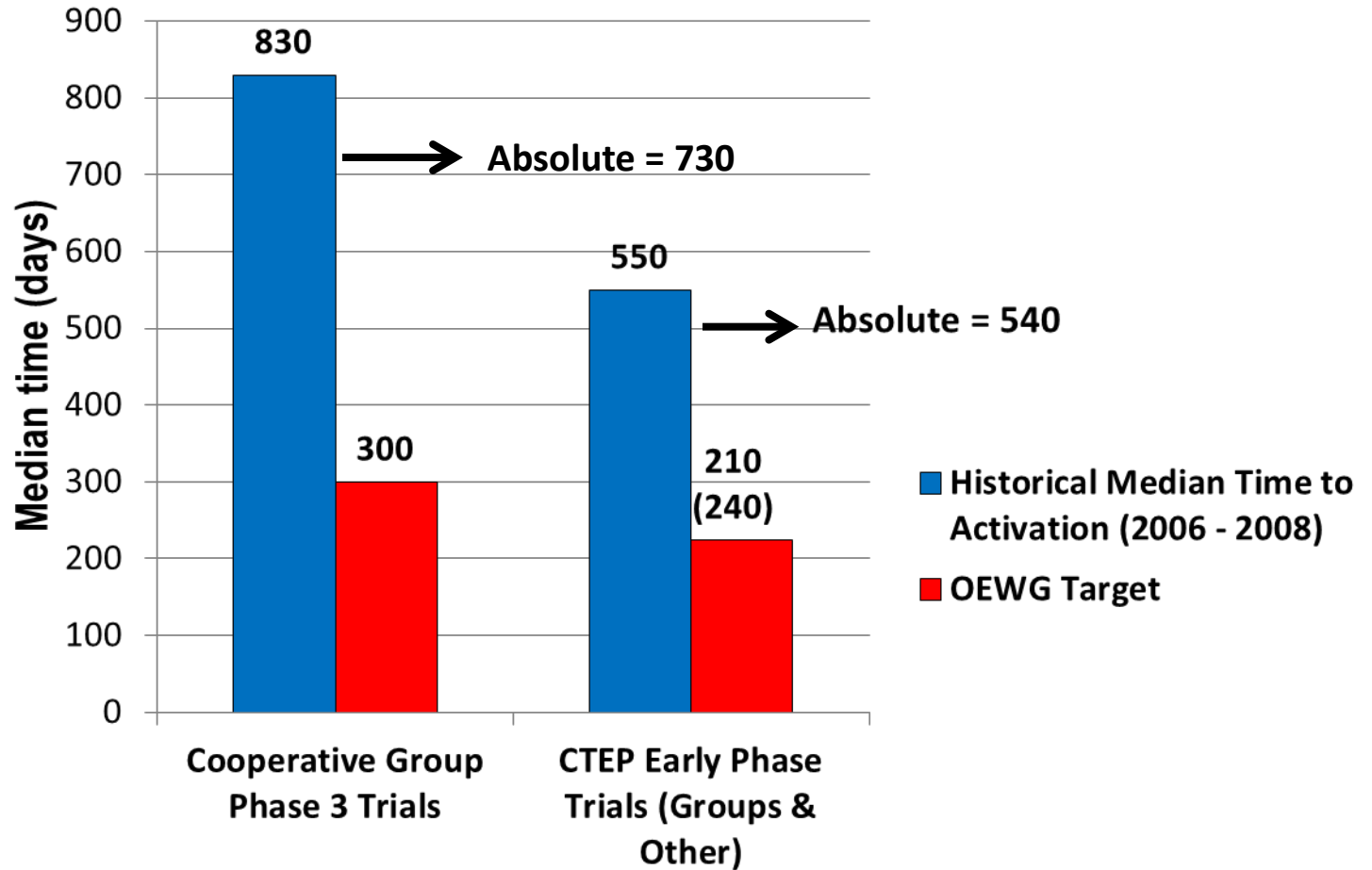


# Operational Efficiency Working Group

## Overview of Recommendations & Implementation

- **New process to develop trials in interactive & collaborative fashion**
- **Timelines for target and absolute timelines for trial development (review of proposal to activation)**
- **Developed implementation plans to achieve targets**
  - **As of Apr 2010:** All Group treatment trials monitored per new timelines
  - **As of Jan 2011:** All trials that do not achieve “absolute” deadlines do not go forward

# Historical vs OEWG Target & Absolute Timelines



**Protocol terminated if absolute timelines not achieved**

# Revision of Timelines in April 2012

- **New Absolute Deadlines Based on Initial Assessment of Improvement in Timelines**
  - Decrease for Early Phase Studies (including larger Phase 2 Concepts) from 540 to 450 days
  - Decrease for Phase 3 Studies from 730 to 540 days
  - Implementation in April 2012
- **Institution of 6 Month Deadline for CTEP Cooperative Research & Development (CRADA) Agreements**

# Update on Implementation

- In March 2010, the OEWG provided recommendations to the NCI on strategies to decrease the time required to activate NCI-sponsored clinical trials
- A major component of the recommendations was the creation of target timelines and absolute deadlines for studies to go from Concept/LOI submission to activation (activation defined as study open to patient enrollment) with revision of absolute deadlines in April 2012
  - **Phase 1 and 2 Studies:**
    - Target Timeline – 210 days (7 months)
    - Absolute Deadline – ~~540 days~~ **Now 450 days (15 months)**
  - **Phase 3 Studies:**
    - Target Timeline – 300 days (10 months)
    - Absolute Deadline – ~~730 days~~ **Now 540 days (18 months)**

# NCI/DCTD/CTEP Response

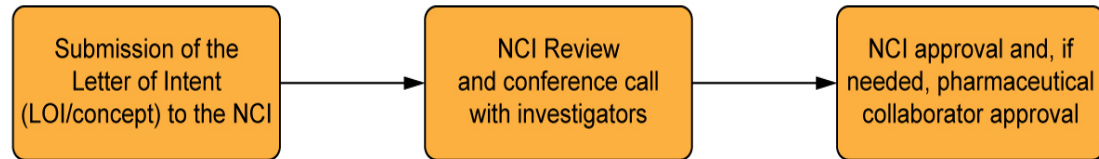
- **Project Managers were hired to closely track study timelines**
- **Secure website developed to allow investigators, operations staff, and NCI staff to monitor timelines**
- **Routine conference calls between NCI reviewers and external investigators instituted at key points in the review process to quickly resolve issues and decrease the need for multiple document revisions**
- **Medical Editors were hired with responsibilities including compiling and editing Consensus Reviews and inserting applicable revisions directly into an unofficial copy of the Protocol using Track Changes<sup>®</sup>, thus saving investigators valuable time**

# OEWG Conference Call Process

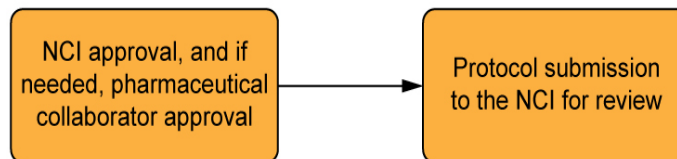
- **Calls between study team & NCI to clarify/discuss Consensus Review to prevent review iterations that may slow the approval process**
- **Conference calls occur at several key points:**
  - **LOI's**: on-hold, approved pending drug company review, or approved
  - **Concepts**: pending response to Steering Cmte evaluation or approved
  - **Protocols**: pending response to Consensus Review
  - **Ad Hoc**: as special issues arise during study development
- **Approximately 686 conference calls between April 2010 – Sept 2012:**
  - 247 calls for LOI's
  - 156 calls for Concepts
  - 262 calls for Protocols

# Stages of LOI/Concept Review & Protocol Development

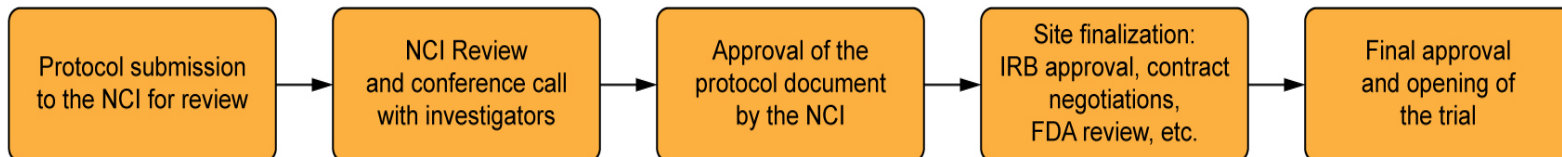
## Stage 1: LOI/concept approval Target = 60 days (LOI), 90 days (concept)



## Stage 2: Protocol submission Target = 60 days (LOI), 90 days (concept)



## Stage 3: Protocol approval and activation Target = 90 days (LOI), 120 days (concept)

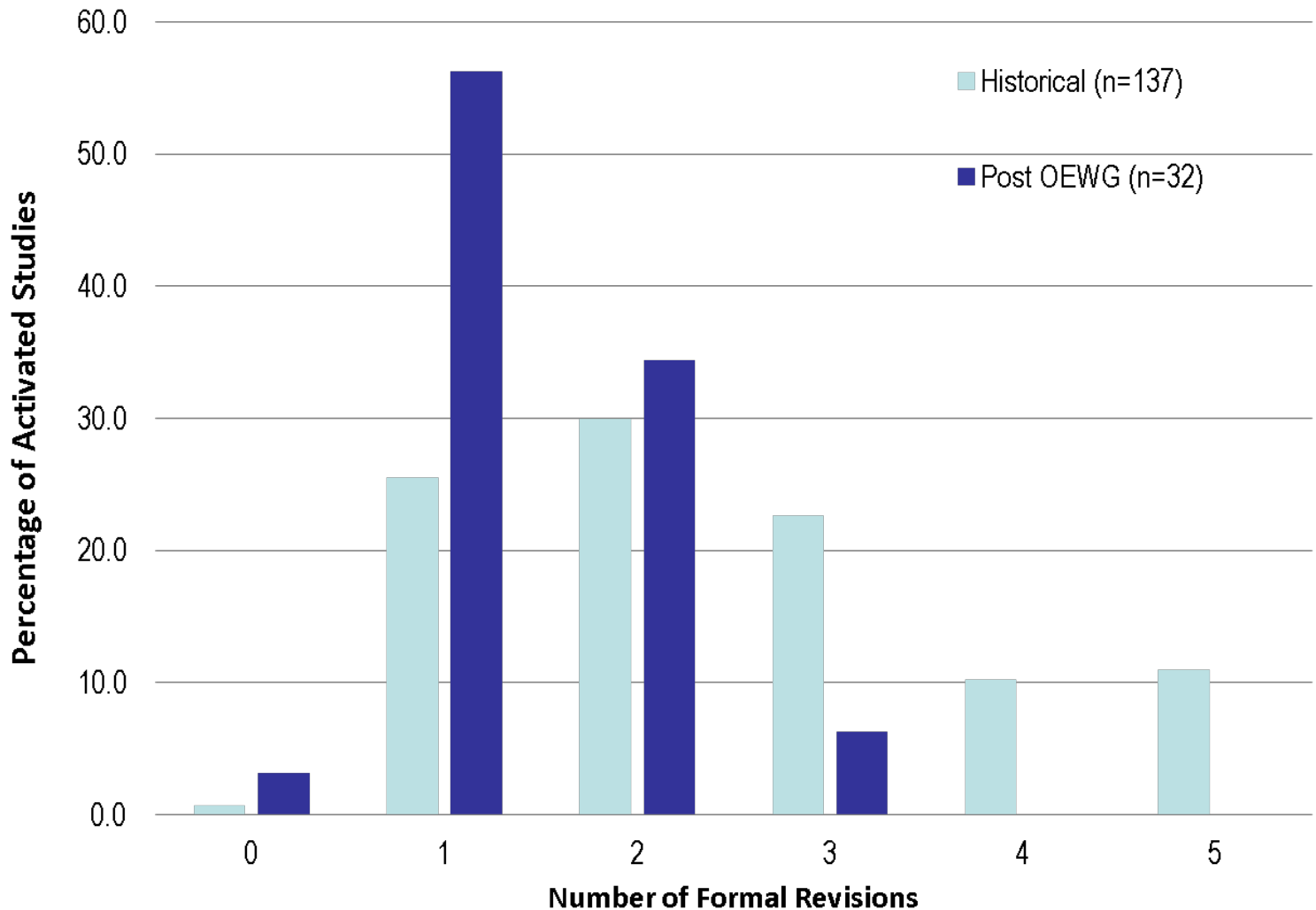


Target for opening trial to enrollment is 210 (LOI)/300 (concept) days  
Absolute deadline for opening trial to enrollment is 540 (LOI)/730 (concept) days



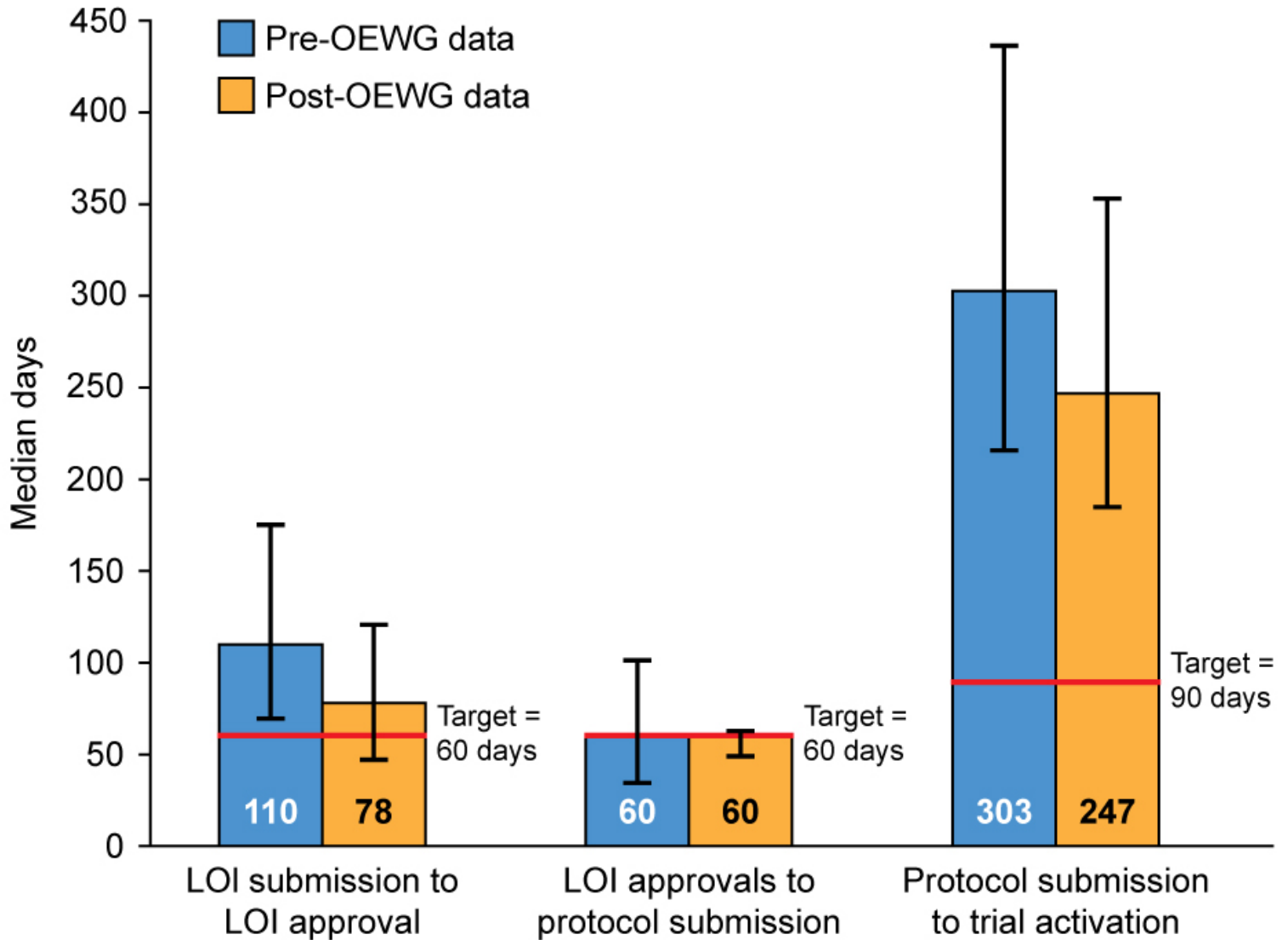
# Comparison of Number of Protocol Revisions Prior to Activation

*Post OEWG Group Studies (All Phases) vs Historical Studies  
As of December 2011*

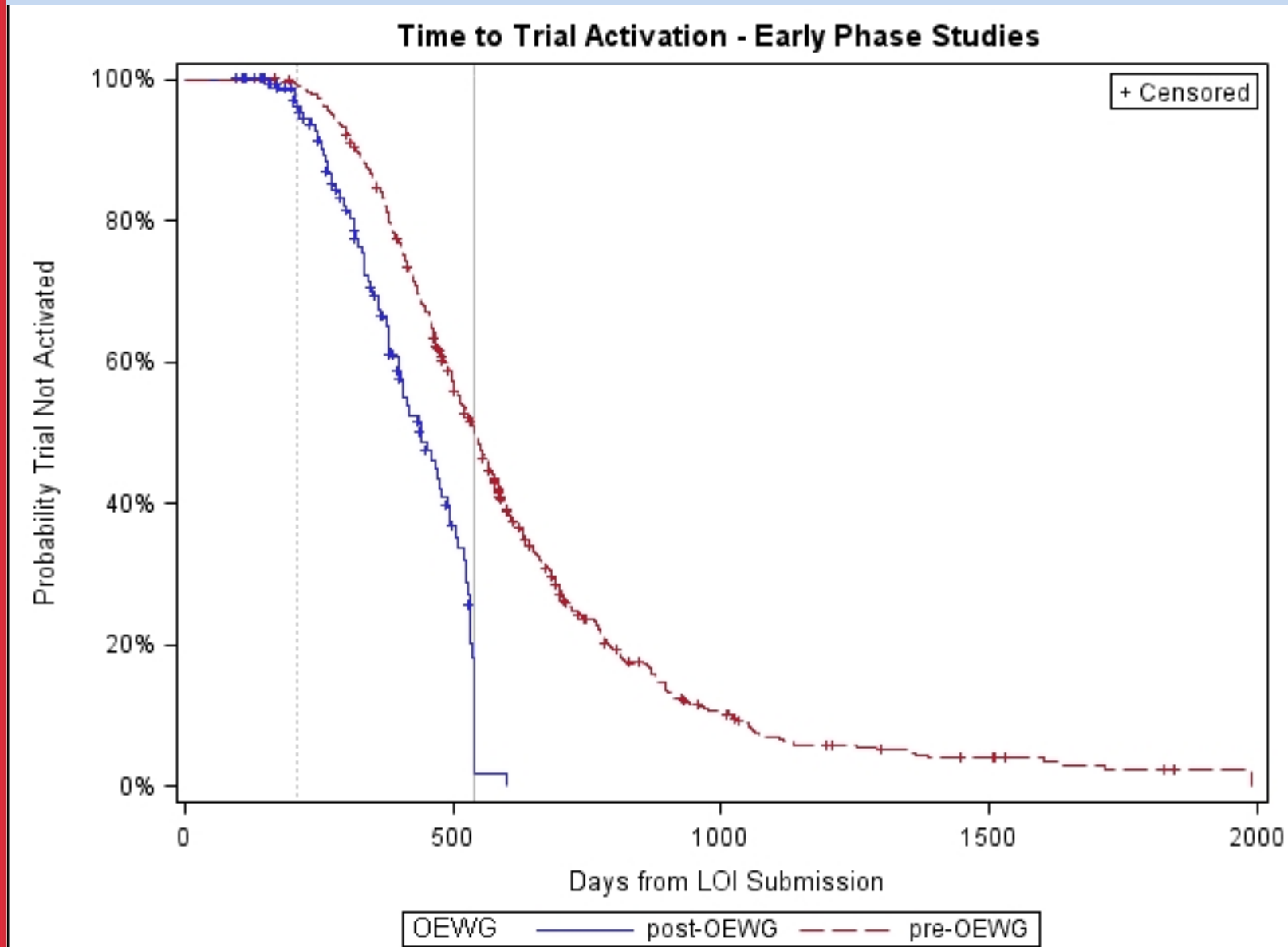


# Breakdown of the study development stages

## *Early Phase Studies*



# Timeline Comparison of Study Activation-**Early Phase Trials**: Historical vs. Post-OEWG (Apr 2010 – Aug 2012)



# Timeline Comparison of Study Activation for Phase 3 Trials: Historical vs. Post-OEWG (Apr 2010 – Aug 2012)

